

CONFIGURING SAGE LINE 50

This document has 2 sections:

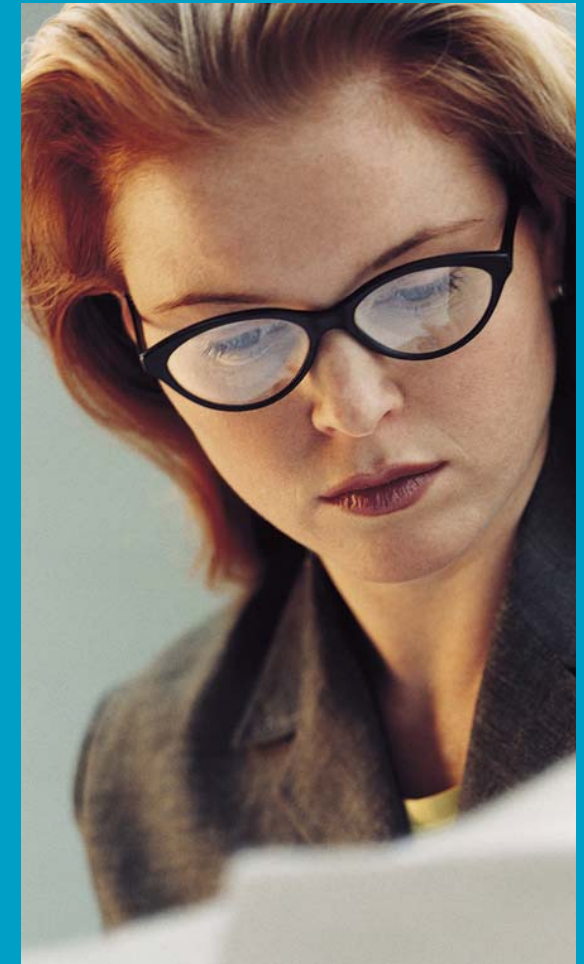
- Quick Start Guide
- Configuration Walkthrough - where each installation step is explained

Up and running within 1 minute

• If you have any problems please don't hesitate to contact support@SecureVirtualOffice.com quoting your username.



Innovative, value-adding solutions at an affordable price



19 Chancel Way
Cheltenham UK
+44 (0) 1242-525298
www.securevirtualoffice.com

Quick Start Guide

There are a few short steps to get you adding accounts and managing your companies finances. This only as to be done once.

- **Launch Sage**
- **Select DB:- SVO Demo**
- **Logon as manager and blank password**
- **Remember not to enter confidential data in this Demo DB**



Innovative, value-adding
solutions at an affordable price

Configuration Walkthrough



1) Launch Sage

After you have logged on the site launch Sage from the Applications web page.

The screenshot shows a Microsoft Internet Explorer browser window titled "Applications - Microsoft Internet Explorer". The address bar displays the URL: <https://www.securevo.com/LaunchPad/NMHome.asp?pgid=NMAApplications>. The page content includes the Secure Virtual Office logo and the slogan "Innovative, value-adding solutions at an affordable price". Below this is a section titled "SVO Applications" with a navigation menu containing "Applications", "Connections", "Options", and "Download Client". The main content area is titled "Applications" and contains the following text: "This page shows all your applications. To launch an application, click its icon. To refresh your applications list, click [refresh application list](#). To logon as another user, click [logon again](#)." Below the text is a table listing various applications.

Application	Description
Access 2003	Database Application
ACT! Professional for Workgroups	Contact Management
Excel 2003	Spreadsheet Application
Outlook 2003	Email Application
PowerPoint 2003	Presentation Application
Publisher 2003	Desktop Publishing
Sage Line 50 Financials	Accounts Application
Word 2003	Word processing Application

User: SVO DEMO\user.two

Innovative, value-adding solutions at an affordable price

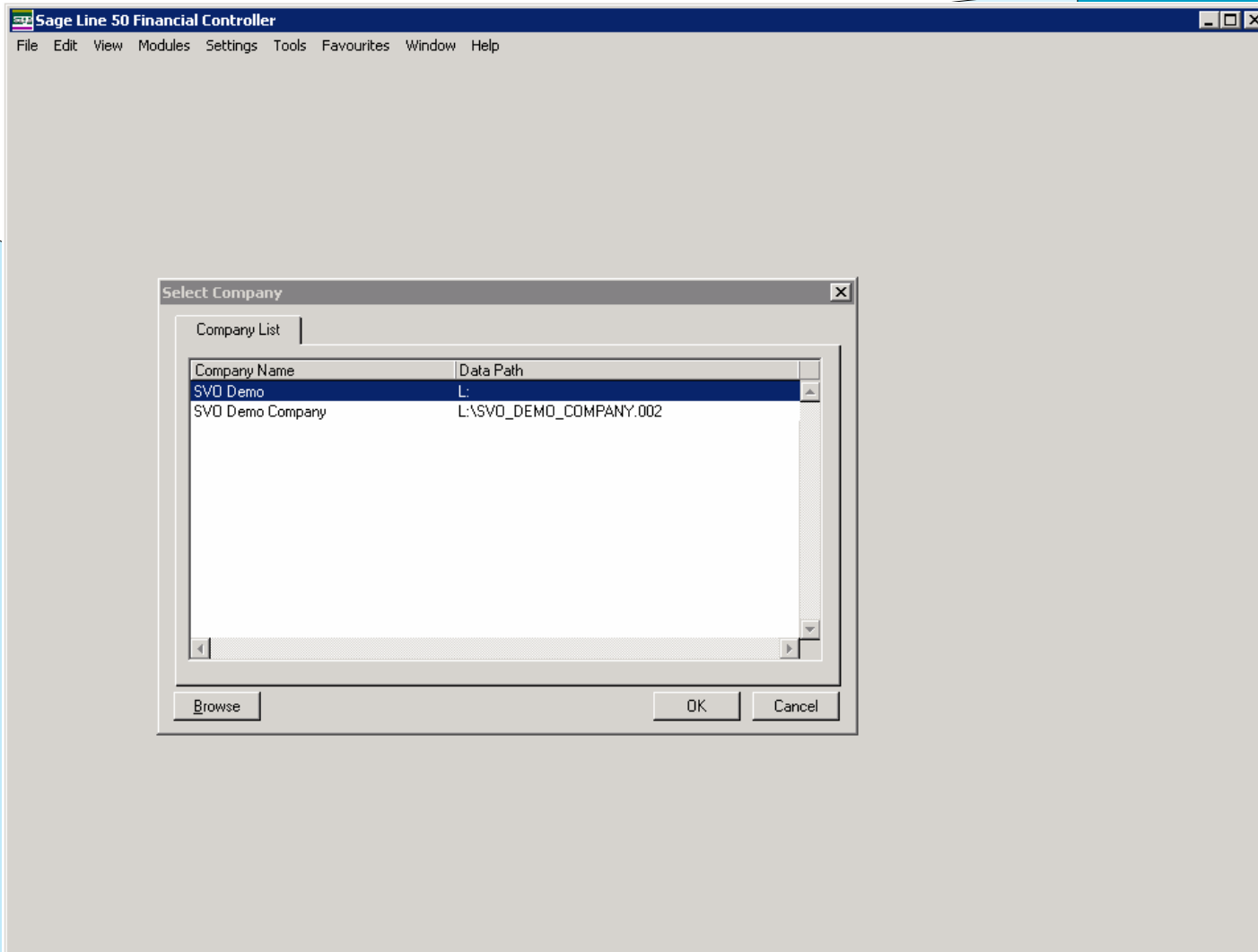
Configuration Walkthrough



2) Select DB

When you open SAGE you will be prompted to select a DB.
Select the SVO Demo DB
Hit OK

Innovative, value-adding solutions at an affordable price



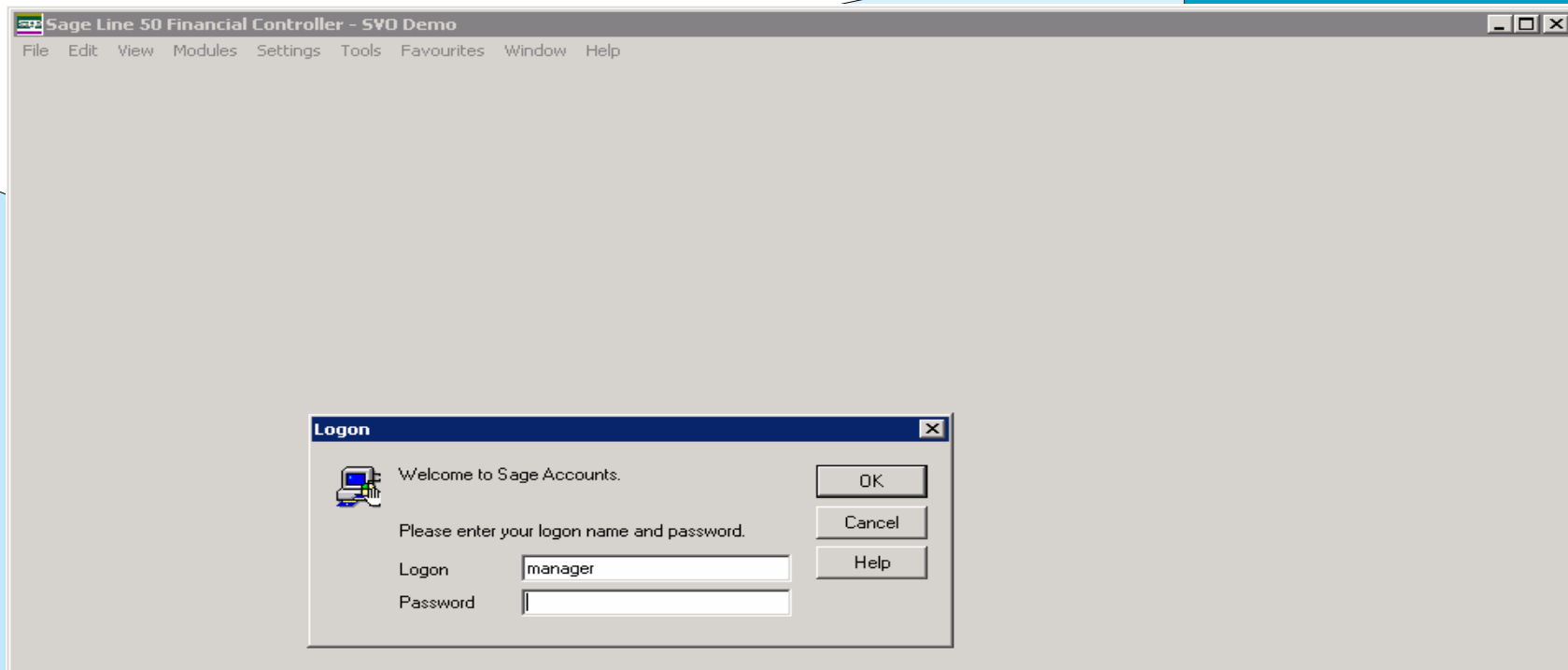
Configuration Walkthrough



3) Logon to DB

You can log on to the DB with the default Manager and blank password.
Hit OK

Innovative, value-adding solutions at an affordable price



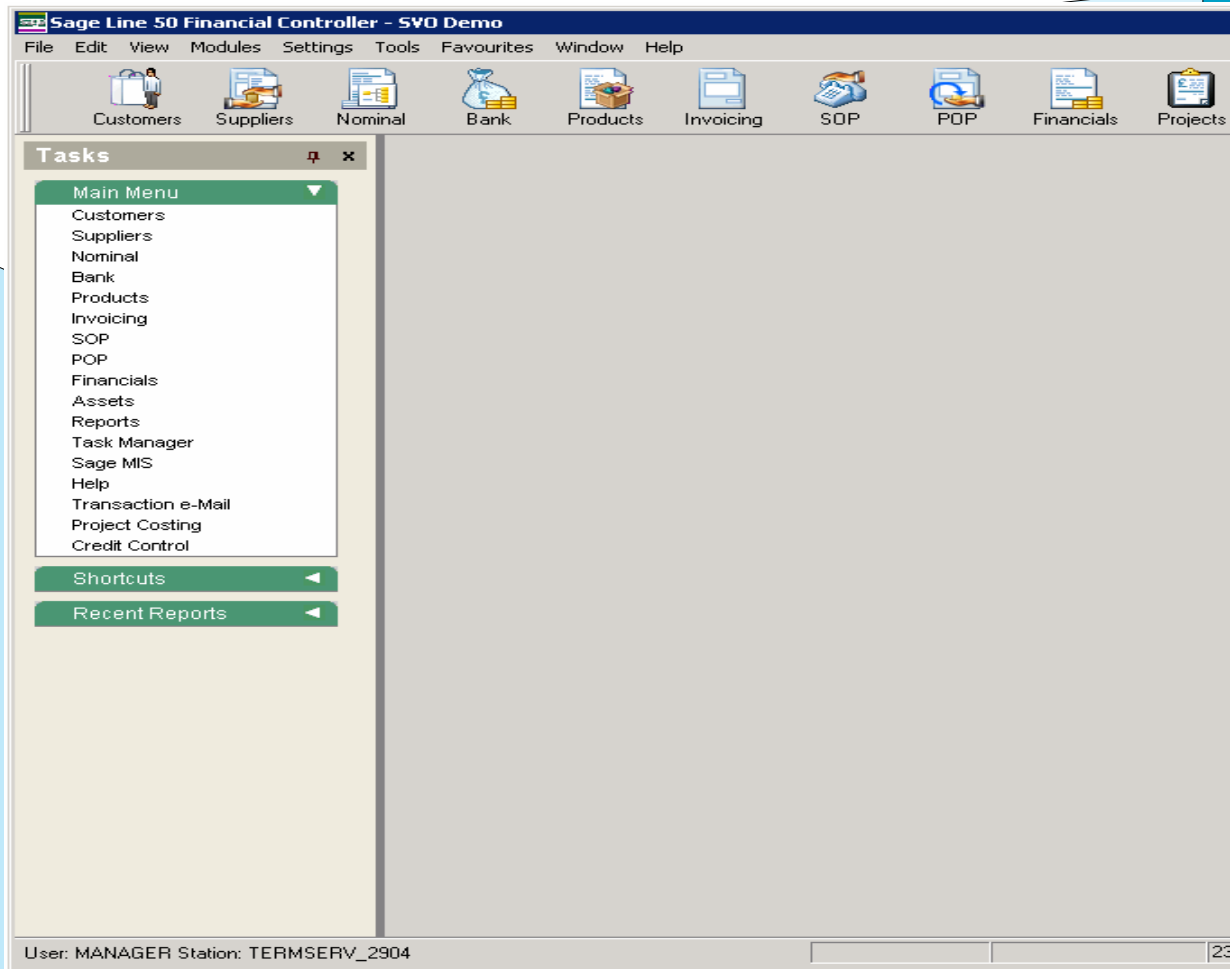
Configuration Walkthrough



4) SAGE is ready to use!

NOTE: This is a demo database and accessed by other users of the system so don't enter confidential data
If you require a DB to upload your company data to please contact sales

Innovative, value-adding solutions at an affordable price



- If you have any problems please don't hesitate to contact support@SecureVirtualOffice.com quoting your username.